




*Advancing the Profession of Project Management*

# **SW Ohio 2016 Annual Membership Event**

*January 19, 2016*

# Agenda

5:30 pm – 6:00 pm	Registration & Networking
6:00 pm – 6:15 pm	Welcome & Introducing  Rise Together
6:15 pm – 6:50 pm	2016 Strategic Review Volunteer Opportunities
6:50 pm – 7:00 pm	Continuing Certification Requirements (CCR) program refresher
7:00 pm – 8:00 pm	Q&A / Networking

A special appreciation for tonight's sponsor:



**Mahendra Vora** – Executive Chairman Vora Ventures  
**Terry Quinn** – General Manager –Sales & Recruiting  
**Mike Meister** – Sr Consultant

# Thank you to the 2015 Board of Directors



**Ann Sandman**  
*President-Elect*



**CJ Jang**  
*President*



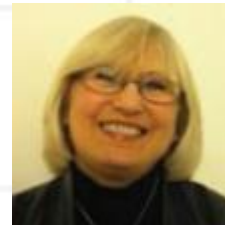
**Charlie Slaven**  
*Past President*



**Chris Solomon**  
*VP Finance*



**Ramesh Pulapaka**  
*VP Outreach*



**Deb Lebow**  
*VP Communications*



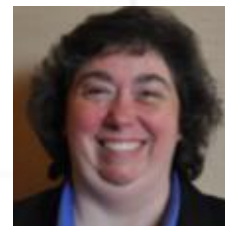
**Sandip Basu**  
*VP Marketing*



**Frank Bernhardt**  
*VP Membership*



**Jenn Dabbelt**  
*VP Administration*



**Missy Semm**  
*VP Prof Development*



**Jagdish Phuloria**  
*VP Training & Cert*

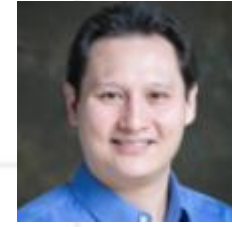
# Welcome to the New 2016 Board of Directors



**Sandip Basu**  
*President-Elect*



**Ann Sandman**  
*President*



**CJ Jang**  
*Past President*



**Chris Solomon**  
*VP Finance*



**Ramesh Pulapaka**  
*VP Outreach*



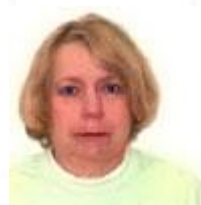
**Craig Carr**  
*VP Communications*



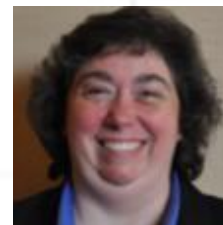
**Dan Eslinger**  
*VP Marketing*



**Frank Bernhardt**  
*VP Membership*



**Bev Strochinsky**  
*VP Administration*



**Missy Semm**  
*VP Prof Development*



**Jagdish Phuloria**  
*VP Training & Cert*

# SW Ohio Mission and Vision

## Mission

*The PMI SW Ohio Chapter is and will continue to be the preeminent project management professional organization in Southwest Ohio.*

## Vision

*The PMI SW Ohio Chapter develops and sustains highly capable project management professionals who deliver excellent project and program results while advancing the adoption of PMI standards and best practices.*

# Accomplishments for 2015



## Professional Development Events

- Mega event
- Breakfast & Dinner Meetings
- LIM 2015

## Volunteers & Communications

- Riverboat appreciation event
- Website migration
- Online nominee submission
- Social media (LinkedIn, Twitter, Facebook)

## Marketing

- PMI Booth Material/Banners
- Chapter Brochure

## Outreach

- Deer Park High School Survey course build
- College Outreach
- Chapter Happy Hours (EAB & Mega Event)
- Chamber of Commerce – SchmoozaPalooza

## Training

- Spring PMP Certification Course
- PMP Train the Trainer (July 25<sup>th</sup>)
- Fall PMP Certification Course

## Administration

- Charter Renewal
- Conflict of Interest Amendment
- Chapter Storage & Meeting location
- New Board Member Transitions
- Operations Manual refresh

# Strategic Direction : PE<sup>4</sup>

**Excellence:** PMI SW Ohio will strive for Operational Excellence and drive accountability across our strategy

**Partnership:** PMI SW Ohio will foster relationships inside and outside of PMI for the advancement of chapter interests



**Experience:** PMI SW Ohio will provide demonstrable value and benefits for chapter membership

**Education:** PMI SW Ohio will provide access to innovative learning and growth experiences for every chapter member

**Engage:** PMI SW Ohio will offer relevant and diverse opportunities for our members to participate.



# PE<sup>4</sup> Strategic Objectives & Target Programs

## Partnerships

### Internal & External Relationships

- Chamber of Commerce
- BOLD
- Ascendum
- Marketing program & Sponsorship
- Deer Park High School
- College Outreach
- ENACTUS

## Education

### Quality training & learning Opportunities

- Monthly dinner meetings
- PMP & CAPM Certification classes
- High School PM curriculum
- MEGA Event

## Engage (Participation)

### Increased interaction and involvement of members

- Networking Events
- Birds of a Feather
- Mentoring
- LIM
- Alternative PDU delivery
- PMI Book Club

## Experience (Satisfaction)

### Voice of the Member (Value)

- Newsletters
- VOC Survey
- PDU/PDD opportunities

## Excellence

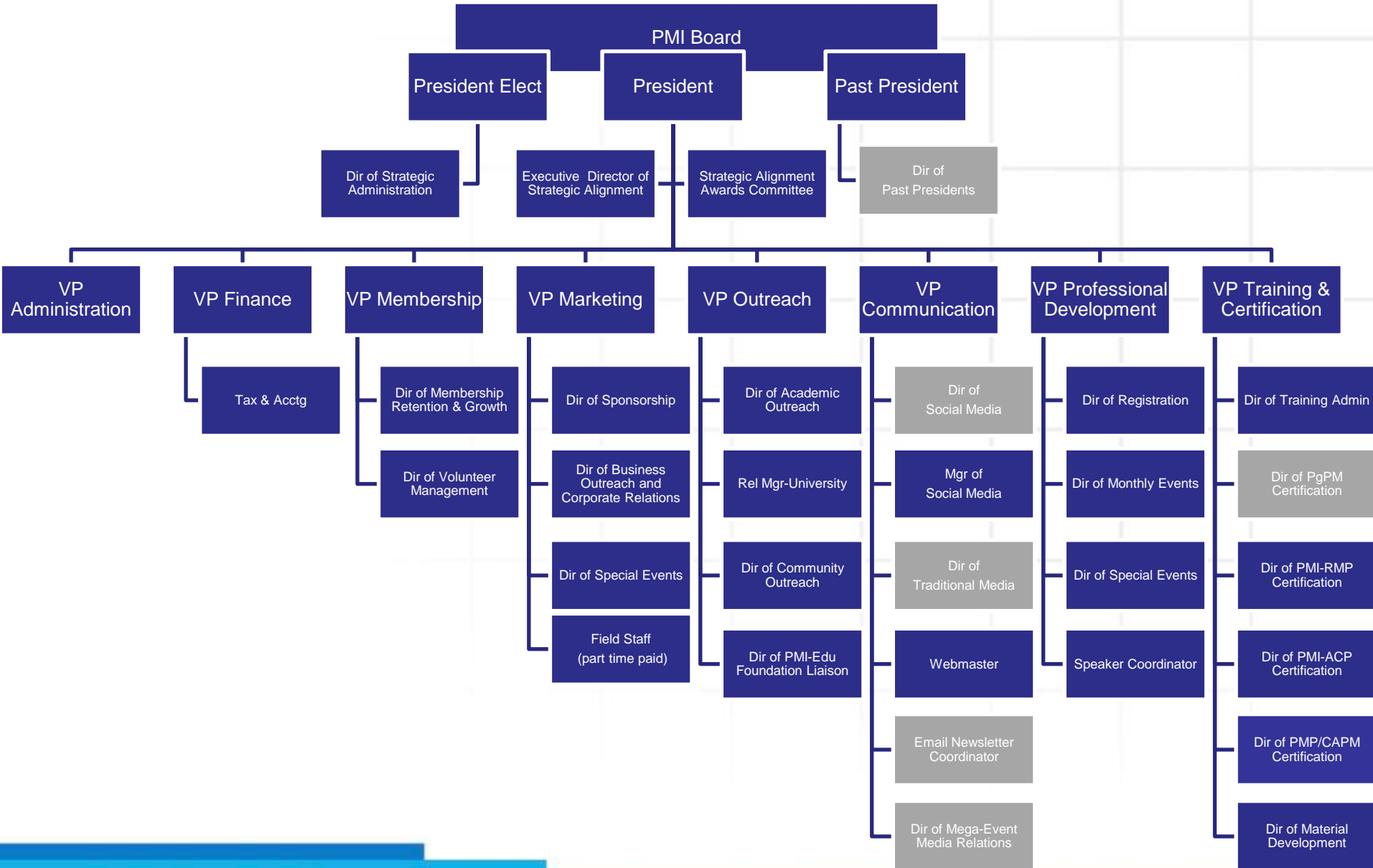
### Operational discipline and accountability to effectively deliver on strategic plan

- Key Performance Indicators by Objective
- Presidential Sponsorship of Strategic Objectives
- Chapter/BOD Commitment
- Financial analysis & budgeting

# We Need Your Help!

Directive Sponsor	Owners	Names	Objective
Partnership <b>President-Elect</b>	VP Marketing VP Outreach	Dan Eslinger Ramesh Pulapaka	Foster relationships inside and outside of PMI for the advancement of chapter interests
Education <b>Past President</b>	VP Training VP Programs	Jagdish Phuloria Missy Semm	Provide access to innovative learning and growth experiences for every chapter member
Engage <b>President</b>	VP Communications VP Past-President VP Membership	Craig Carr CJ Jang Frank Bernhardt	Offer relevant and diverse opportunities for our members to participate.
Experience <b>President</b>	VP Membership VP Programs VP Admin	Frank Bernhardt Missy Semm Beverly Strochinsky	Provide demonstrable value and benefits for chapter membership
Excellence <b>President</b>	President President-Elect Finance	Ann Sandman Sandip Basu Chris Solomon	Strive for Operational Excellence and drive accountability across our strategy

# Southwest Ohio PMI Chapter Board



# Open Volunteer Opportunities...*and more*

## Professional Development Team

*Missy Semm*

- Monthly Dinner Meetings
  - Registration
  - Meeting hosts
- Mega Event
  - Registration
  - Breakout room hosts
  - Vendor Coordinator
  - Speaker Coordinator

## Communications Team

*Craig Carr*

- Newsletter Coordinator

## Excellence

*Ann Sandman*

- Past-President Connect
- Dir of Strategic Admin

# Announcements & Upcoming Events

- Deer Park High School Volunteer opportunities
- Winter PMP Training (Jan 30<sup>th</sup> – Feb 27<sup>th</sup>)
- Next Dinner Meeting - Feb 10<sup>th</sup> in Blue Ash @ Crown Plaza
  - Mind over Matter -- Are You Managing a Project and a Subject
    - Paul Baumgartner, PMP –The Christ Hospital
- 2016 Mega Event – April 12<sup>th</sup> & 13<sup>th</sup>
- Continuing Certification Requirements (CCR) Update

# Mega Event April 12-13, 2016

## Transformational Leadership in Project Management

- **Earn 14 PDUs or more!**
  - Enlighten, Engage & Empower Your Team's Effectiveness
  - Obtain new 'Strategic' PDUs
- **Amazing keynote speakers:**
  - **Matthew Kelly**, a highly acclaimed speaker and New York Times bestselling author will be presenting *systems that drive increasing levels of personal and professional satisfaction* for you and your teams.
  - **Bradley Brezinski**, President and Chief Strategy Architect of S2A (Strategy to Action) will discuss *perspectives of strategy* that exist within an organization.
  - **Shawn Nason**, a recent distinguished and recognized top Cincinnati Innovation Professional speaks about *When Innovation and Project Management Collide*
  - **Joan Coolidge**, with Initiate Impact will address *Transformational Change*
- **Industry Tracks**
  - Sessions focused on Healthcare, Construction, Manufacturing, Product Management, and IT
- **Vendor Fair**

# Continuing Certification Requirements (CCR)

- Maintaining your PMI certification is a significant competitive advantage.
- Program updates include more emphasis on employer-demanded skills as outlined in the **PMI Talent Triangle**
  - Technical expertise
  - Leadership expertise
  - Strategic and Business management expertise



# CCR Guidance Summary

## PMI Talent Triangle



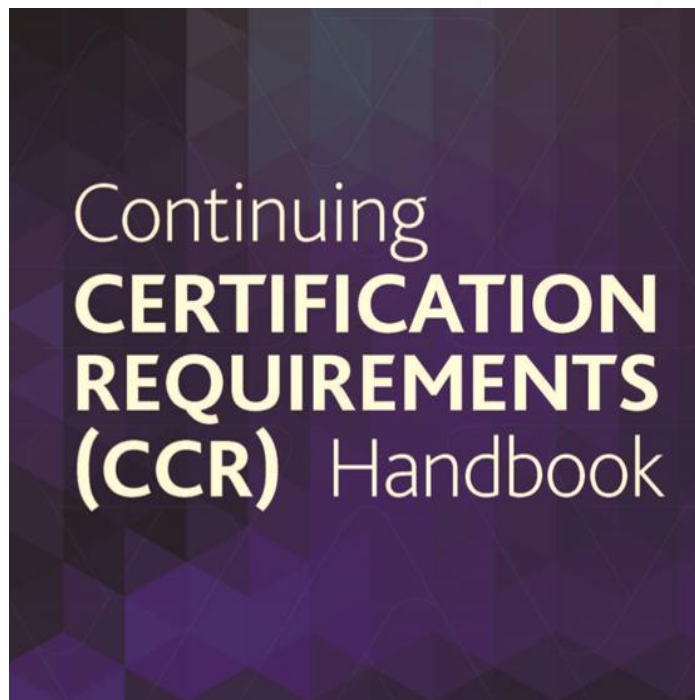
Educational (Min 35)	Giving Back to the Profession (Max 25)
Catg. A – Courses offered by PMI’s R.E.P.s or Chapters and Communities	Catg. D – Creating New Project Management Knowledge (Authoring, Speaking) (Max 25)
Catg. B – Continuing Education - university, college, conference, seminar	Catg. E – Volunteer Service (Volunteer for PM organization; Volunteer PM services) (Max 25)
Catg. C – Self Directed Learning	Catg. F – Work as a Professional in Project Management (Max 8)



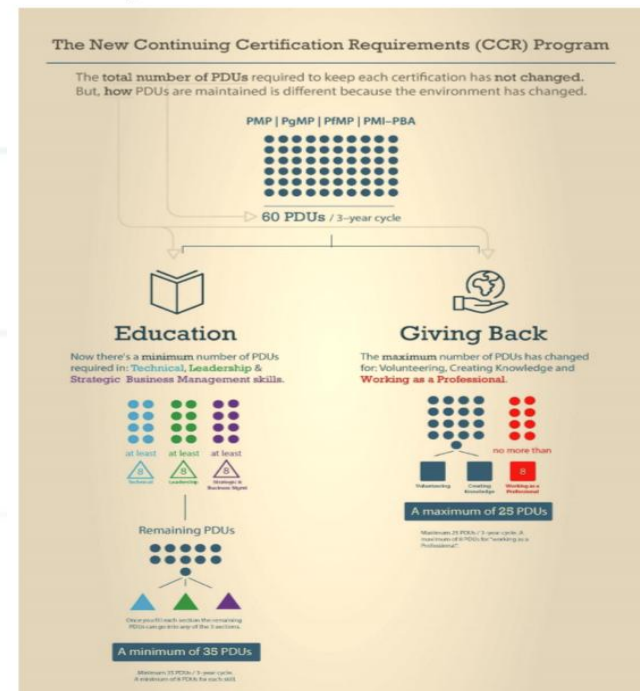


# PMI has valuable resources to help!

- Visit our chapter website → [Certification/CCR](#) for links and FAQs
- CCR Handbook and User Guides are available on [PMI.org](#)



For PMP, PgMP, PfMP, PMI-PBA



# Learn More!



Project Management Institute  
Southwest Ohio Chapter

SW Ohio Volunteer Opportunities



PMI CCR Q&A



Business Opportunities



*Advancing the Profession of Project Management*

**Thank You For Being a Valued Member  
of our Chapter!!**